

North Harbour 2 Watermain and
Northern Interceptor in Shared Corridor

May 2016

VOLUME THREE
CONSENT DRAWINGS

Prepared for



GENERAL DRAWINGS

DRAWING No.	TITLE
2010673.011	COVER SHEET
2010673.012	DRAWING INDEX
2010673.411	OVERALL PIPELINE ROUTE PLAN
2010673.412	OVERALL PIPELINE LONGSECTION
2010673.415	LEGEND AND NOTES

CIVIL DRAWINGS

DRAWING No.	TITLE
2010674.301	WOODLANDS PARK TUNNEL - SHEET 1 OF 2
2010674.302	WOODLANDS PARK TUNNEL - SHEET 2 OF 2
2010674.311	METCALFE ROAD RAIL CROSSING OPTION 1 - OPEN TRENCHED
2010674.312	METCALFE ROAD RAIL CROSSING OPTION 2 - PIPE JACKING
2010674.316	SH18 CROSSING - CHAINAGE 16,950m
2010674.321	SH18 CROSSING - CHAINAGE 20,700m
2010674.322	TAUHINU ROAD TRENCHLESS OPTION
2010674.323	GREENHITHE ROAD TRENCHLESS OPTION
2010674.324	SH18 TRENCHLESS OPTION - CHAINAGE 27,250m - SHEET 1 OF 2
2010674.325	SH18 TRENCHLESS OPTION - CHAINAGE 27,250m - SHEET 2 OF 2
2010674.326	ALBANY HIGHWAY CROSSING TRENCHLESS OPTION - SHEET 1 OF 2
2010674.327	ALBANY HIGHWAY CROSSING TRENCHLESS OPTION - SHEET 2 OF 2
2010674.331	OTEHA STREAM OPTION 2 - TRENCHLESS - SHEET 1 OF 2
2010674.332	OTEHA STREAM OPTION 2 - TRENCHLESS - SHEET 2 OF 2
2010674.336	ALBANY EXPRESSWAY CROSSING - TRENCHLESS
2010674.351	TYPICAL SH18 CONSTRUCTION SECTION
2010674.353	TYPICAL LINE VALVE CHAMBER

EROSION AND SEDIMENT CONTROL

GENERAL ARRANGEMENT

DRAWING No.	TITLE
2010676.001	REPRESENTATIVE OPEN-CUT TRENCH ESC LOCATION PLAN
2010676.002	REPRESENTATIVE SH18 CUT TO FILL OPEN-CUT TRENCH LOCATION PLAN
2010676.003	REPRESENTATIVE TUNNELING ACCESS SHAFT ESC LOCATION PLAN
2010676.004	REPRESENTATIVE PIPE-BRIDGE ESC LOCATION PLAN
2010676.005	CATCHPIT PROTECTION, DECANTING EARTH BUND, DIVERSION BUNDS (TYPICAL DETAILS)
2010676.006	STABILISED ENTRANCE, SUPER SILT FENCE (TYPICAL DETAILS)

WATERMAIN ALIGNMENT DRAWINGS

DRAWING No.	TITLE
2010673.510	ROUTE PLAN
2010673.511	ROUTE PLAN
2010673.512	ROUTE PLAN
2010673.513	ROUTE PLAN
2010673.514	ROUTE PLAN
2010673.515	ROUTE PLAN
2010673.516	ROUTE PLAN
2010673.517	ROUTE PLAN
2010673.518	ROUTE PLAN
2010673.519	ROUTE PLAN
2010673.520	ROUTE PLAN
2010673.521	ROUTE PLAN
2010673.522	ROUTE PLAN
2010673.523	ROUTE PLAN
2010673.524	ROUTE PLAN
2010673.525	ROUTE PLAN
2010673.526	ROUTE PLAN
2010673.527	ROUTE PLAN
2010673.528	ROUTE PLAN
2010673.529	ROUTE PLAN
2010673.530	ROUTE PLAN
2010673.531	ROUTE PLAN
2010673.532	ROUTE PLAN
2010673.533	CATHODIC PROTECTION ANODE BED

STRUCTURAL DRAWINGS

PIPE BRIDGES

DRAWING No.	TITLE
2010675.201	ORATIA STREAM CROSSING OPTION 2 GENERAL ARRANGEMENT
2010675.211	OPANUKU STREAM CROSSING GENERAL ARRANGEMENT
2010675.221	PAREMUKA STREAM CROSSING GENERAL ARRANGEMENT
2010675.231	SWANSON STREAM CROSSING GENERAL ARRANGEMENT
2010675.241	OTEHA STREAM CROSSING OPTION 2 GENERAL ARRANGEMENT

WATERCARE STANDARD DRAWINGS

DRAWING No.	TITLE
2001979.061	SCOUR VALVE CHAMBER DETAILS - CIRCULAR LID - SHEET 1
2001979.092	PIPE TRENCHES - TYPICAL BEDDING, BACKFILL & REINSTATEMENT DETAILS
2001979.143	150 MM AIR VALVE CHAMBER - DOUBLE ACCESS FOR PIPES 700 TO 1070 NB
2001979.146	150 MM AIR VALVE CHAMBER - DOUBLE ACCESS FOR PIPES 1200 TO 1900 NB

FOR CONSENT

Plot Date: Mon 04, 2016 - 4:47pm U:\ases\42072300\01_DWG_Current\08_AEF\Main_Route_AEF_Drawing_Set\2010673.012.dwg

ISSUE	DATE	AMENDMENT	BY	APPD.
2	22.02.16	ISSUED FOR CONSENT - UPDATED WITH WSL COMMENTS	M.W.	M.A.E.
1	04.12.15	ISSUED FOR CONSENT	M.W.	M.A.E.

DESIGNED	N.H.	12.15
DES. CHECKED	A.M.	12.15
DRAWN	I.W.	12.15
DWG. CHECKED	N.H.	12.15
PROJECT LEADER	M.A.E.	12.15
INFRASTR'R APP'D		



Watercare

COPYRIGHT - This drawing, the design concept, remain the exclusive property of Watercare Services Limited and may not be used without approval. Copyright reserved.

NORTH HARBOUR No.2 WATERMAIN

GENERAL

DRAWING INDEX

CAD FILE	2010673.012	DATE	22.02.16
ORIGINAL SCALE	A3	CONTRACT No.	5663
	N/A		
REF No.	WMNH2-91-G-012	ISSUE	-
DWG No.	2010673.012		2

NH2 and NI Shared Corridor – Consent Drawings Key

This document provides additional information on the key feature description (refer Table 1) to the consents drawings package for NH2 and NI in the shared corridor dated May 2016 (refer to initial key provided in Drawing No 2010673.415).

Table 1 Consent Drawings Key

Key	Description of key features
	NH2 Watermain and Chainage
	Proposed Designation Boundary
	Permanent Accessway (unchanged)
	Line Valve (unchanged)
	Air Valve (unchanged)
	Scour Valve (unchanged)
	Cathodic Protection (unchanged from Drawing No 2010673.415 but key missing on Drawing No 2010673.514, 2010673.531, 2010673.533)
	Indicative NI Surface Construction Area and/or Access
	Indicative NI Shaft Location (unchanged)
	NI Phase 1 (unchanged)
	NI Future Phases (unchanged)
	NH2 Trenchless Set-up Site
	Option(s) 2 for NH2
	Option(s) 2 Trenchless Set-up Site for NH2
	Option 3 Trenchless Set-up Site for NH2
	Proposed Causeway widening as part of Greenhithe Bridge Watermain Duplication (GBWD) and Causeway Project (already consented) on Drawings No 2010673.225 and 2010673.226.
	Jacked pipe (on Drawings No 2010674.311 and 2010674.312)
Existing Underground Services on Civil Drawings (No 2010674.301 to .336) and Structural Drawings (No 210675.201 to .241):	
	Stormwater
	Wastewater
	Water Supply (except in Drawings No 2010674.311 and .312 where WA is displayed instead of W)
	Gas
	Electricity
	Communication cables (Telecom, Telstra, Fibre Optic, Vector Communications)



FOR CONSENT

ISSUE	DATE	AMENDMENT	BY	APPD.
2	22.02.16	ISSUED FOR CONSENT - UPDATED WITH WSL COMMENTS	M.W.	M.A.E.
1	04.12.15	ISSUED FOR CONSENT	M.W.	M.A.E.

DESIGNED	N.H.	12.15
DES. CHECKED	M.R.	12.15
DRAWN	B.K.	12.15
DWG. CHECKED	M.R.	12.15
PROJECT LEADER	M.A.E.	12.15
INFRASTR'R APP'D		

OPERATIONS
INFRASTRUCTURE

Watercare
COPYRIGHT - This drawing, the design concept, remain the exclusive property of Watercare Services Limited and may not be used without approval. Copyright reserved.

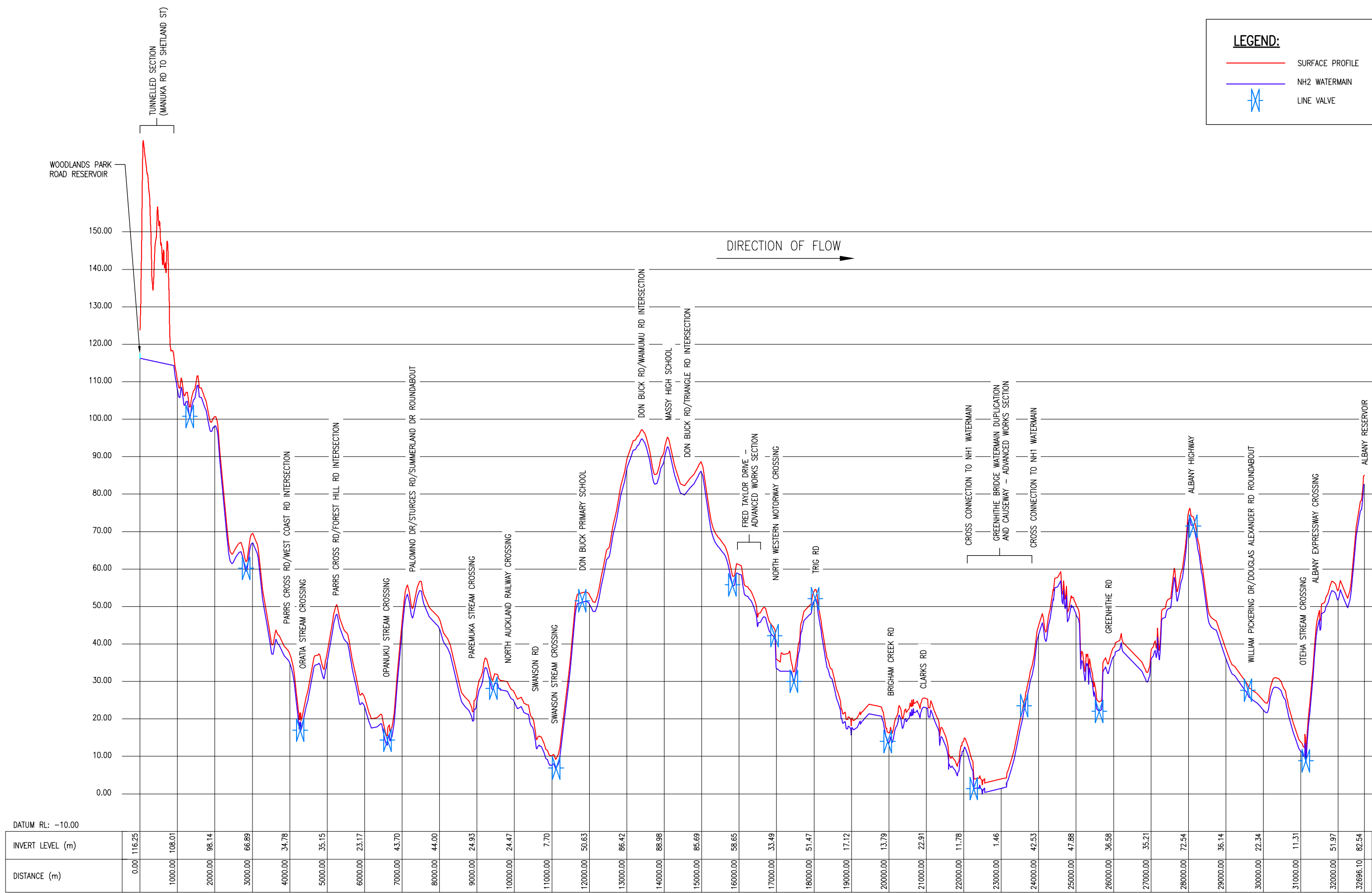
NORTH HARBOUR No.2 WATERMAIN
GENERAL
OVERALL PIPELINE ROUTE PLAN

CAD FILE	2010673.411	DATE	22.02.16
ORIGINAL SCALE	A3	CONTRACT No.	5663
	N/A		
REF No.	WMNH2-91-G-411	ISSUE	-
DWG No.	2010673.411		2

Plot Date: Mar 04, 2016 1:49pm U:\naiba\2016\2016\01_DWG_Current\08_AEE\Main Route AEE Drawing Set\ 2010673.411.dwg

LEGEND:

- SURFACE PROFILE
- NH2 WATERMAIN
- LINE VALVE



LONG SECTION
 SCALES: HORIZ 1:100000
 VERT 1:1000

FOR CONSENT

Plot Date: Mar 04, 2016 - 8:53am U:\Jobs\2016\2016_01_DWG_Current\08_AEE\Main Route AEE Drawing Set\ 2010673.412.dwg

ISSUE	DATE	AMENDMENT	BY	APPD.
2	22.02.16	ISSUED FOR CONSENT - UPDATED WITH WSL COMMENTS	M.W.	M.A.E.
1	04.12.15	ISSUED FOR CONSENT	M.W.	M.A.E.

DESIGNED	N.H.	12.15
DES. CHECKED	M.R.	12.15
DRAWN	B.K.	12.15
DWG. CHECKED	M.R.	12.15
PROJECT LEADER	M.A.E.	12.15
INFRASTR APP'D		










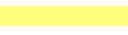

Watercare

COPYRIGHT - This drawing, the design concept, remain the exclusive property of Watercare Services Limited and may not be used without approval. Copyright reserved.

NORTH HARBOUR No.2 WATERMAIN
GENERAL
OVERALL PIPELINE LONGSECTION

CAD FILE	2010673.412	DATE	22.02.16
ORIGINAL SCALE	A3	CONTRACT No.	5663
AS SHOWN			
REF No.	WMNH2-91-G-412	ISSUE	-
DWG No.	2010673.412		2

PROPOSED SERVICES

-  NH2 WATERMAIN AND CHAINAGE
-  PROPOSED DESIGNATION BOUNDARY
-  PERMANENT ACCESSWAY
-  LINE VALVE
-  AIR VALVE
-  SCOUR VALVE
-  CATHODIC PROTECTION
-  INDICATIVE NI SURFACE CONSTRUCTION AREA AND/OR ACCESS
-  INDICATIVE NI SHAFT LOCATION
-  NI PHASE 1
-  NI FUTURE PHASES

NOMENCLATURE

- RC REINFORCED CONCRETE
- PE POLYETHYLENE
- CLS CONCRETE LINED STEEL
- PVC POLY VINYL CHLORIDE

NOTES

1. SITE LAYOUT AND DESIGNS INDICATIVE ONLY AND SUBJECT TO CHANGE DURING DETAILED DESIGN DEVELOPMENT.
2. DESIGNATION AREA TO BE REDUCED UPON COMPLETION OF WORKS.
3. COORDINATES ARE IN TERMS OF NEW ZEALAND TRANSVERSE MERCATOR (NZTM) SYSTEM.
4. LEVELS ARE IN TERMS OF THE LINZ MEAN SEA LEVEL DATUM (AUCKLAND 1946).
5. ALL AERIAL PHOTOGRAPHY AS AT DECEMBER 2015 IS BASED ON INFORMATION AVAILABLE FROM THE AUCKLAND COUNCIL GIS VIEWER.

FOR CONSENT

U:\Jobs\42073300\01 - DWG_Current\08_AEE_Main_Route_AEE_Drawing_Set\ 2010673.415.dwg
 Plot Date: Mar 04, 2016 - 3:18pm

ISSUE	DATE	AMENDMENT	BY	APPD.
2	22.02.16	ISSUED FOR CONSENT -- UPDATED WITH WSL COMMENTS	N.H.	M.A.E.
1	04.12.15	ISSUED FOR CONSENT	N.H.	M.A.E.

DESIGNED	N.H.	12.15
DES. CHECKED	M.A.E.	12.15
DRAWN	I.W.	12.15
DWG. CHECKED	N.H.	12.15
PROJECT LEADER	M.A.E.	12.15
INFRASTR APP'D		

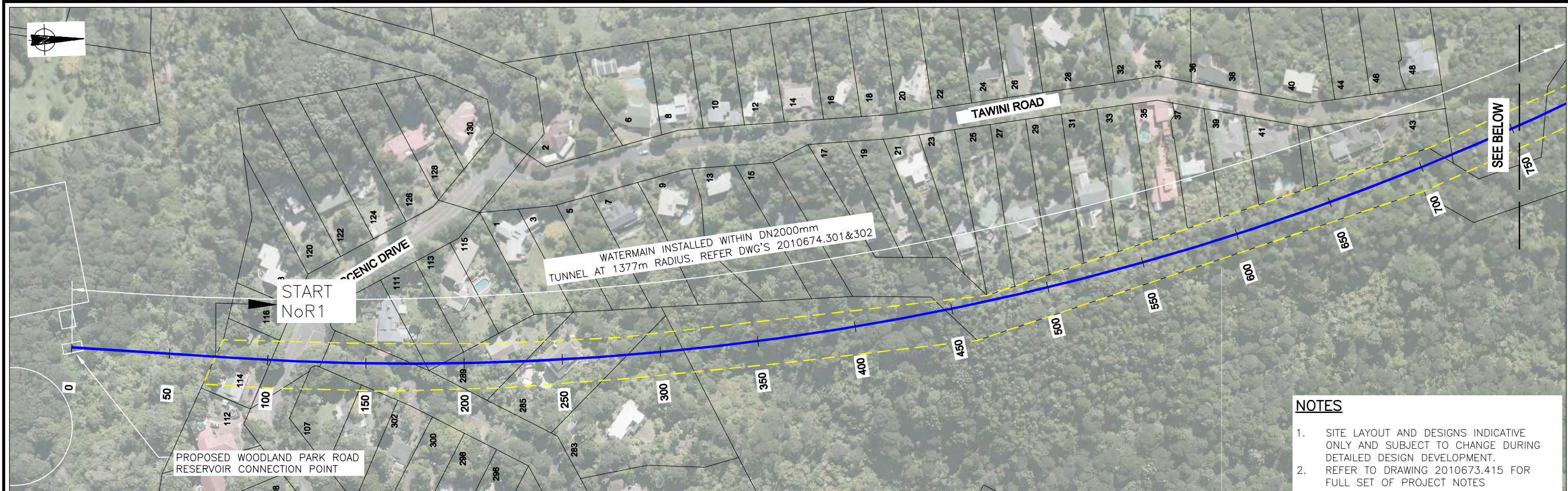
SIGNATORY 1
 OPERATIONS
 SIGNATORY 2
 INFRASTRUCTURE



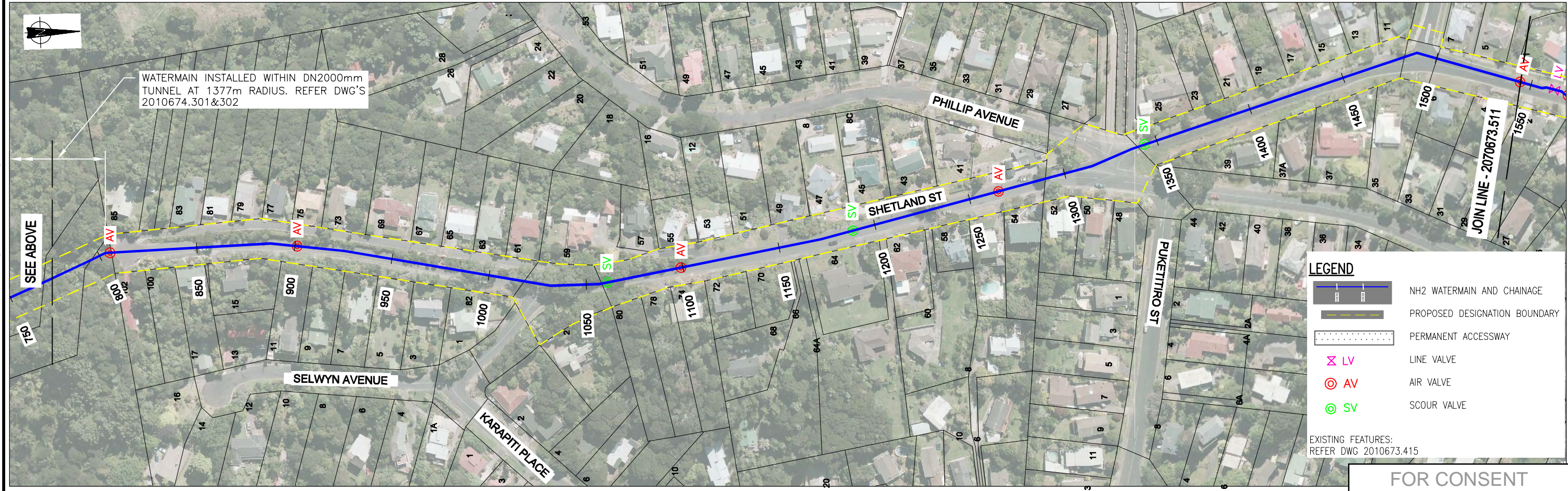
COPYRIGHT - This drawing, the design concept, remain the exclusive property of Watercare Services Limited and may not be used without approval. Copyright reserved.

NORTH HARBOUR No.2 WATERMAIN
GENERAL
LEGEND AND NOTES

CAD FILE	2010673.415	DATE	22.02.16
ORIGINAL SCALE	A3	CONTRACT No.	5663
	N/A		
REF No.	WMHN2-91-G-415	ISSUE	-
DWG No.	2010673.415		2



- NOTES**
- SITE LAYOUT AND DESIGNS INDICATIVE ONLY AND SUBJECT TO CHANGE DURING DETAILED DESIGN DEVELOPMENT.
 - REFER TO DRAWING 2010673.415 FOR FULL SET OF PROJECT NOTES



- LEGEND**
- NH2 WATERMAIN AND CHAINAGE
 - PROPOSED DESIGNATION BOUNDARY
 - PERMANENT ACCESSWAY
 - LV LINE VALVE
 - AV AIR VALVE
 - SV SCOUR VALVE
- EXISTING FEATURES:
REFER DWG 2010673.415

FOR CONSENT

ISSUE	DATE	AMENDMENT	BY	APPD.
2	22.02.16	ISSUED FOR CONSENT - UPDATED WITH WSL COMMENTS	W.O.	M.A.E.
1	03.12.15	ISSUED FOR CONSENT	W.O.	M.A.E.

DESIGNED	N.H.	12.15
DES. CHECKED	M.A.E.	12.15
DRAWN	W.O.	12.15
DWG. CHECKED	N.H.	12.15
PROJECT LEADER	M.A.E.	12.15
INFRASTR APP'D		

OPERATIONS
INFRASTRUCTURE

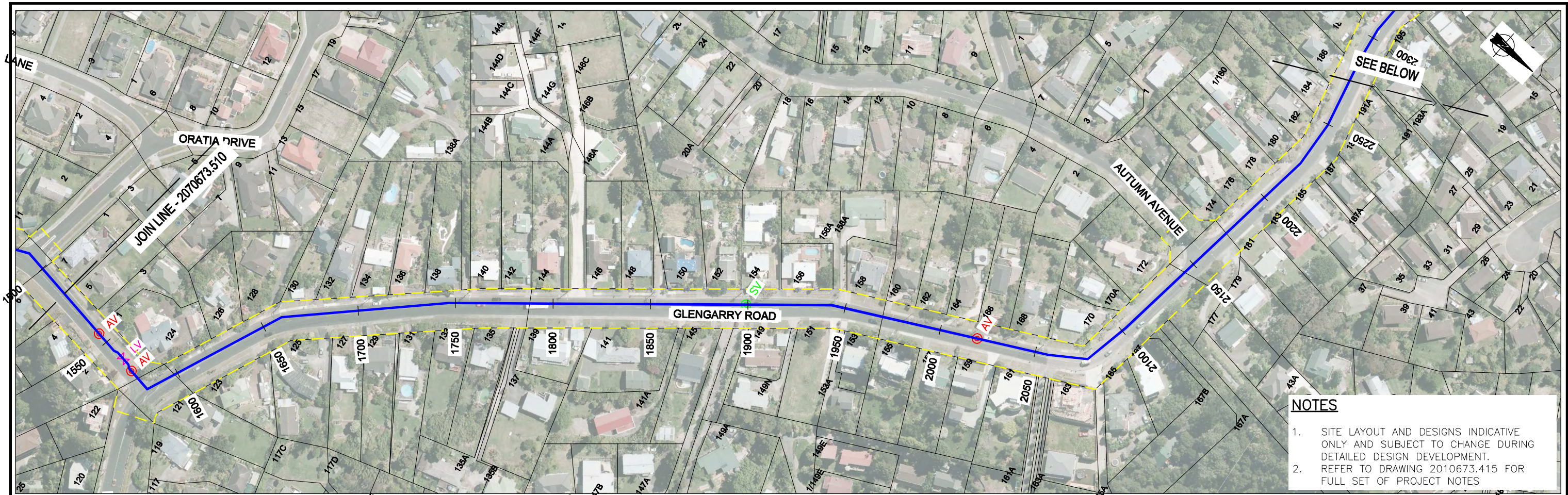
Watercare

COPYRIGHT - This drawing, the design concept, remain the exclusive property of Watercare Services Limited and may not be used without approval. Copyright reserved.

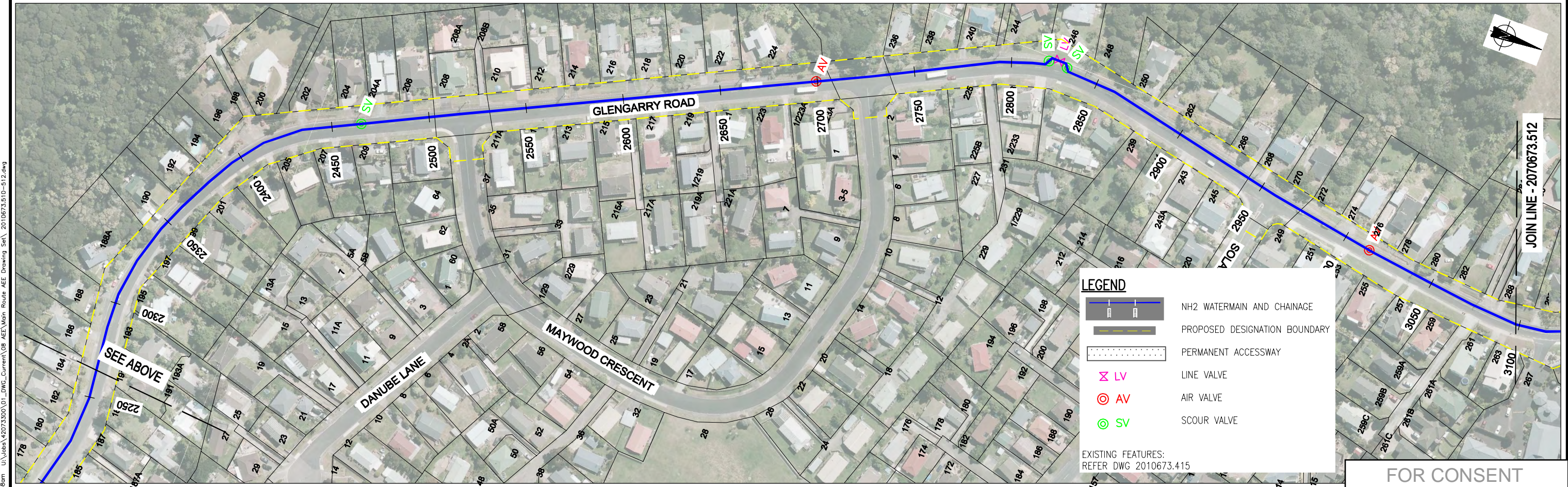
NORTH HARBOUR No.2 WATERMAIN GENERAL ROUTE PLAN

CAD FILE	2010673.510-512	DATE	22.02.16
ORIGINAL SCALE	A3 1:2,000	CONTRACT No.	5663
REF No.	WMNH2-91-G-510	ISSUE	-
DWG No.	2010673.510		2

Plot Date: Mar 04, 2016 - 8:56am U:\naha\2073500\01_DWG_Current\08_AEE\Main Route_AEE_Drawing Set\ 2010673.510-512.dwg



- NOTES**
1. SITE LAYOUT AND DESIGNS INDICATIVE ONLY AND SUBJECT TO CHANGE DURING DETAILED DESIGN DEVELOPMENT.
 2. REFER TO DRAWING 2010673.415 FOR FULL SET OF PROJECT NOTES



LEGEND

- NH2 WATERMAIN AND CHAINAGE
- PROPOSED DESIGNATION BOUNDARY
- PERMANENT ACCESSWAY
- LV LINE VALVE
- AV AIR VALVE
- SV SCOUR VALVE

EXISTING FEATURES:
REFER DWG 2010673.415

FOR CONSENT

ISSUE	DATE	AMENDMENT	BY	APPD.
2	22.02.16	ISSUED FOR CONSENT - UPDATED WITH WSL COMMENTS	W.O.	M.A.E.
1	03.12.15	ISSUED FOR CONSENT	W.O.	M.A.E.

DESIGNED	N.H.	12.15
DES. CHECKED	M.A.E.	12.15
DRAWN	W.O.	12.15
DWG. CHECKED	N.H.	12.15
PROJECT LEADER	M.A.E.	12.15
INFRASTR APP'D		

Watercare

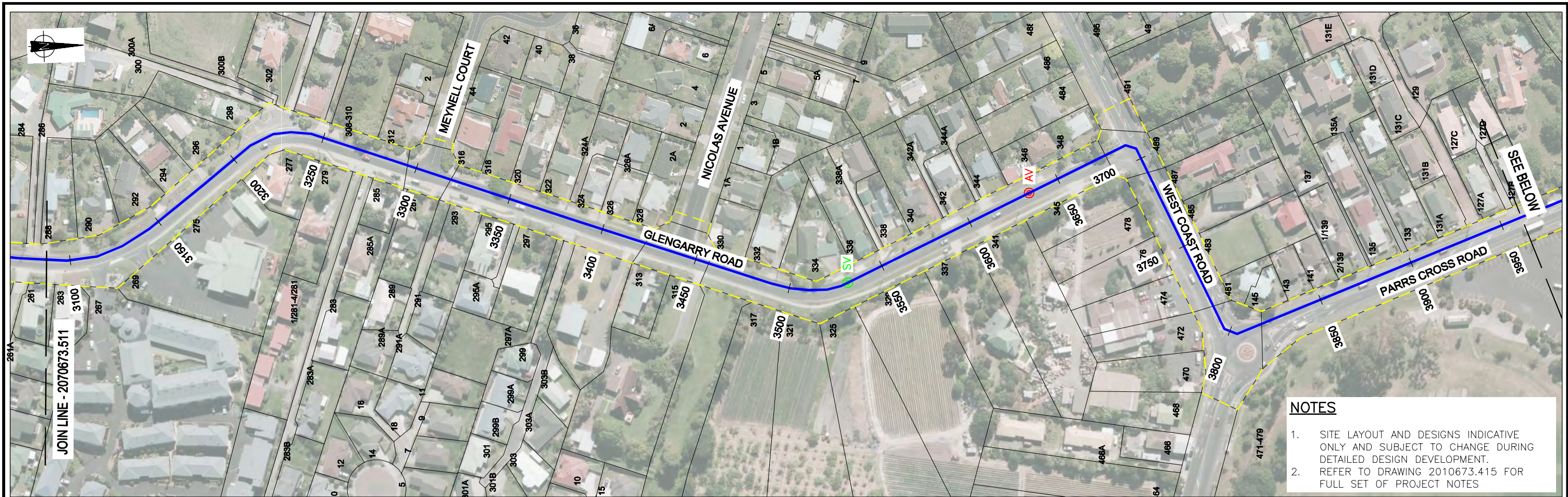
NORTH HARBOUR No.2 WATERMAIN

GENERAL ROUTE PLAN

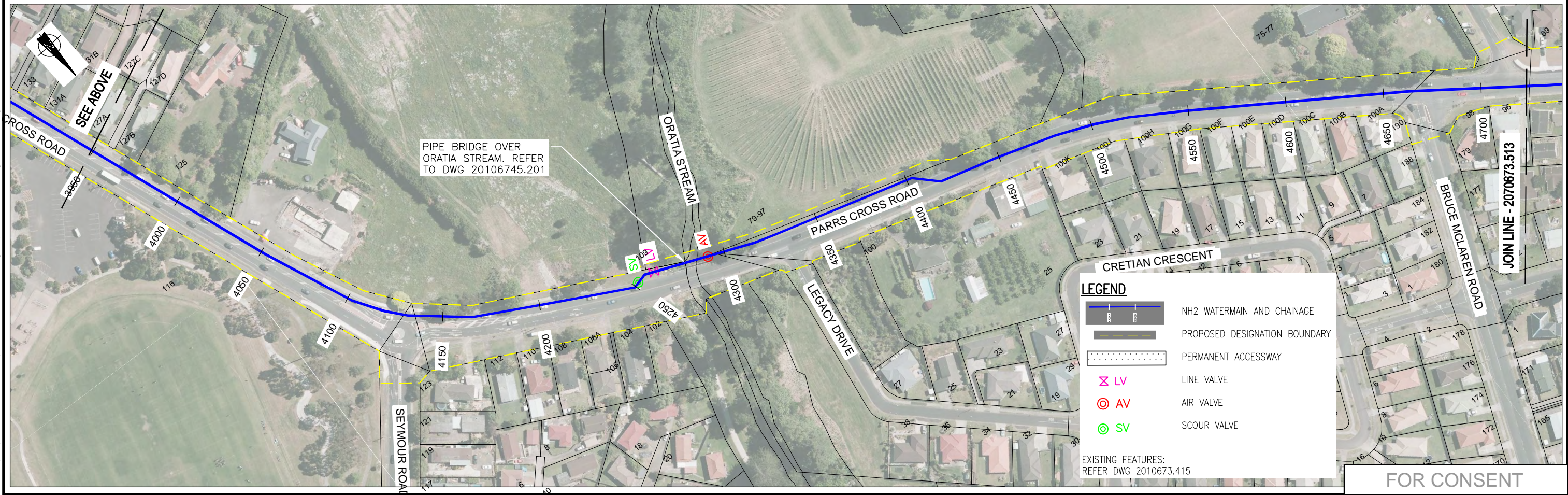
COPYRIGHT - This drawing, the design concept, remain the exclusive property of Watercare Services Limited and may not be used without approval. Copyright reserved.

CAD FILE	2010673.510-512	DATE	22.02.16
ORIGINAL SCALE	A3	CONTRACT No.	5663
REF No.	WMNH2-91-G-511	ISSUE	-
DWG No.	2010673.511		2

Plot Date: Mar 04, 2016 - 8:58am U:\naoh\2010673.510\1_DWG_Current\08_AEE\Main Route_AEE Drawing Set\ 2010673.510-512.dwg



- NOTES**
1. SITE LAYOUT AND DESIGNS INDICATIVE ONLY AND SUBJECT TO CHANGE DURING DETAILED DESIGN DEVELOPMENT.
 2. REFER TO DRAWING 2010673.415 FOR FULL SET OF PROJECT NOTES



FOR CONSENT

ISSUE	DATE	AMENDMENT	BY	APPD.
2	22.02.16	ISSUED FOR CONSENT - UPDATED WITH WSL COMMENTS	W.O.	M.A.E.
1	03.12.15	ISSUED FOR CONSENT	W.O.	M.A.E.

DESIGNED	N.H.	12.15
DES. CHECKED	M.A.E.	12.15
DRAWN	W.O.	12.15
DWG. CHECKED	N.H.	12.15
PROJECT LEADER	M.A.E.	12.15
INFRASTR APP'D		

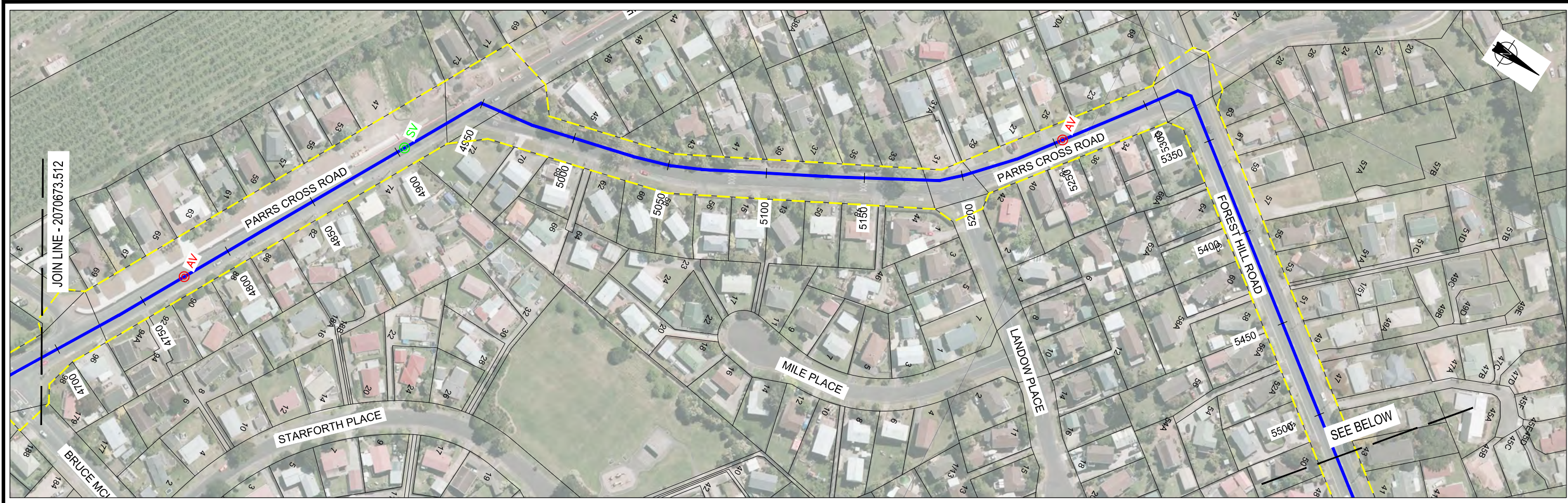
Watercare

COPYRIGHT - This drawing, the design concept, remain the exclusive property of Watercare Services Limited and may not be used without approval. Copyright reserved.

NORTH HARBOUR No.2 WATERMAIN GENERAL ROUTE PLAN

CAD FILE	2010673.510-512	DATE	22.02.16
ORIGINAL SCALE	A3	CONTRACT No.	5663
REF No.	WMNH2-91-G-512	ISSUE	-
DWG No.	2010673.512		2

Plot Date: Mar 04, 2016 - 8:59am U:\naoa\2010673.510\01_DWG_Current\08_AEE\Main Route_AEE_Drawing Set\ 2010673.510-512.dwg



NOTES

- SITE LAYOUT AND DESIGNS INDICATIVE ONLY AND SUBJECT TO CHANGE DURING DETAILED DESIGN DEVELOPMENT.
- REFER TO DRAWING 2010673.415 FOR FULL SET OF PROJECT NOTES

LEGEND

- NH2 WATERMAIN AND CHAINAGE
- PROPOSED DESIGNATION BOUNDARY
- PERMANENT ACCESSWAY
- LV LINE VALVE
- AV AIR VALVE
- SV SCOUR VALVE

EXISTING FEATURES:
REFER DWG 2010673.415

FOR CONSENT

ISSUE	DATE	AMENDMENT	BY	APPD.
2	22.02.16	ISSUED FOR CONSENT - UPDATED WITH WSL COMMENTS	W.O.	M.A.E.
1	03.12.15	ISSUED FOR CONSENT	W.O.	M.A.E.

DESIGNED	N.H.	09.14
DES. CHECKED	M.R.	09.14
DRAWN	B.K.	09.14
DWG. CHECKED	M.R.	09.14
PROJECT LEADER	M.A.E.	09.14
INFRASTR. APP'D		

OPERATIONS
INFRASTRUCTURE

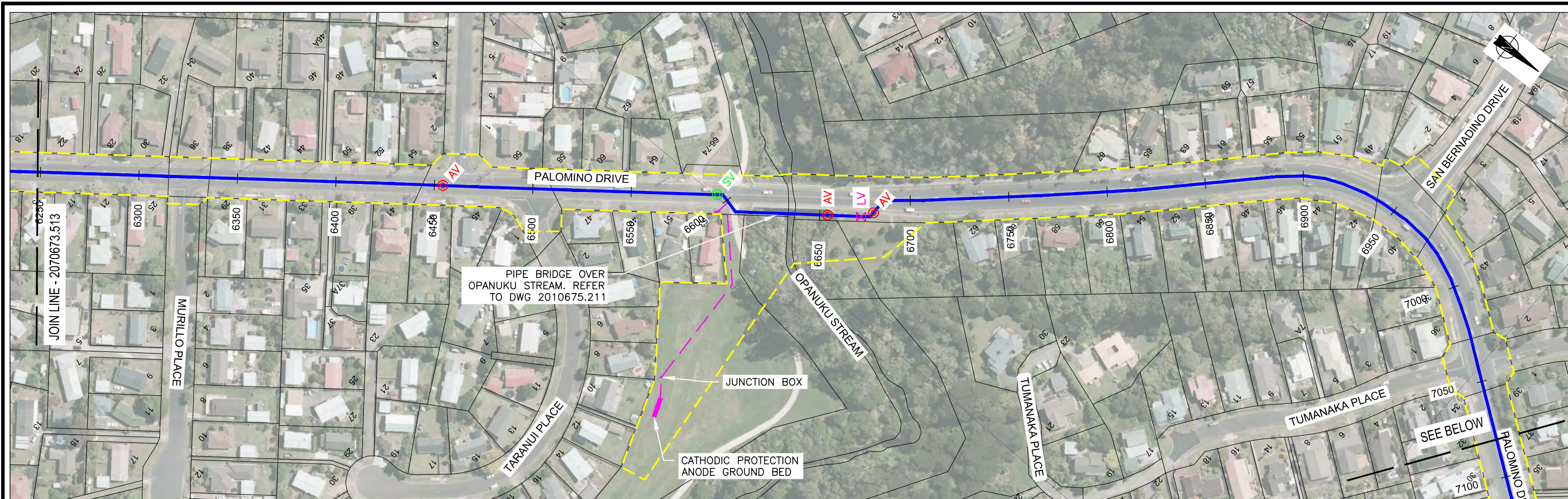
Watercare

COPYRIGHT - This drawing, the design concept, remain the exclusive property of Watercare Services Limited and may not be used without approval. Copyright reserved.



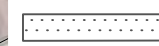



NORTH HARBOUR No.2 WATERMAIN
GENERAL
ROUTE PLAN

CAD FILE	2010673.513-516	DATE	22.02.16
ORIGINAL SCALE	A3	CONTRACT No.	5663
REF No.	WMNH2-91-G-513	ISSUE	2
DWG No.	2010673.513	ISSUE	2

Plot Date: Feb 25, 2016 - 10:53am U:\nobra\20173500\01_DWG_Current\08_AEE\Main Route_AEE_Drawing Set\ 2010673.513-516.dwg



LEGEND

-  NH2 WATERMAIN AND CHAINAGE
-  PROPOSED DESIGNATION BOUNDARY
-  PERMANENT ACCESSWAY
-  LV LINE VALVE
-  AV AIR VALVE
-  SV SCOUR VALVE

NOTES

- SITE LAYOUT AND DESIGNS INDICATIVE ONLY AND SUBJECT TO CHANGE DURING DETAILED DESIGN DEVELOPMENT.
- REFER TO DRAWING 2010673.415 FOR FULL SET OF PROJECT NOTES

EXISTING FEATURES:
REFER DWG 2010673.415

FOR CONSENT

Plot Date: Feb 25, 2016 - 10:54am U:\Jobs\42073300\01_DWG_Current\08_AEE_Main Route AEE Drawing Set\ 2010673.513-516.dwg

ISSUE	DATE	AMENDMENT	BY	APPD.
2	22.02.16	ISSUED FOR CONSENT - UPDATED WITH WSL COMMENTS	W.O.	M.A.E.
1	03.12.15	ISSUED FOR CONSENT	W.O.	M.A.E.

DESIGNED	N.H.	09.14
DES. CHECKED	M.R.	09.14
DRAWN	B.K.	09.14
DWG. CHECKED	M.R.	09.14
PROJECT LEADER	M.A.E.	09.14
INFRASTR APP'D		

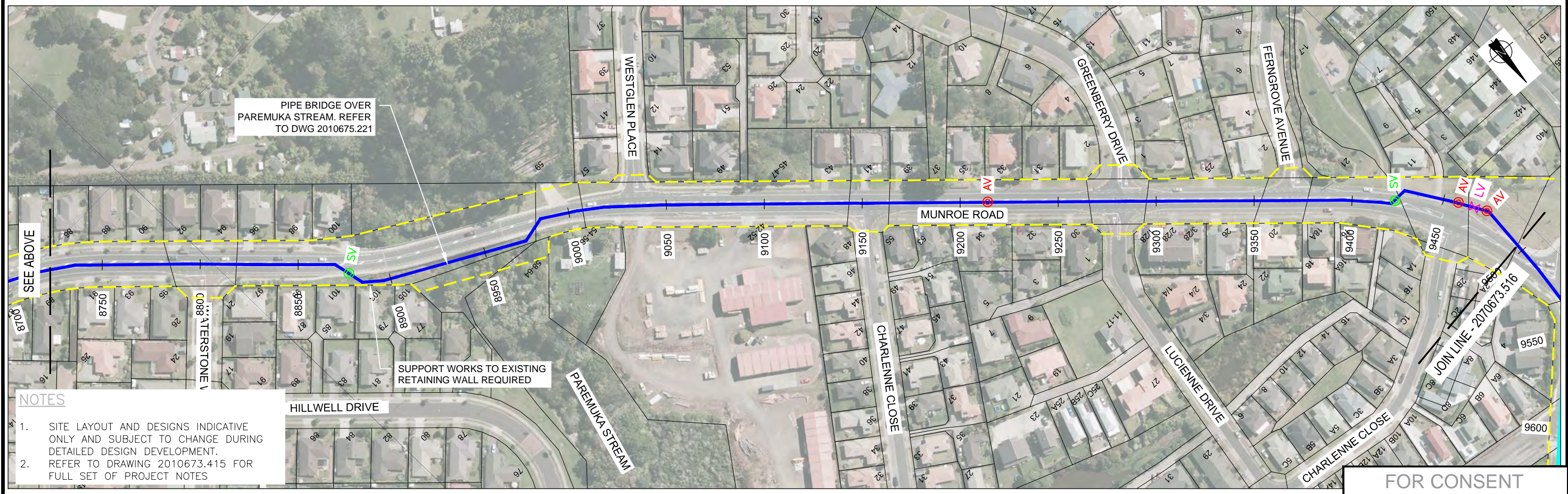
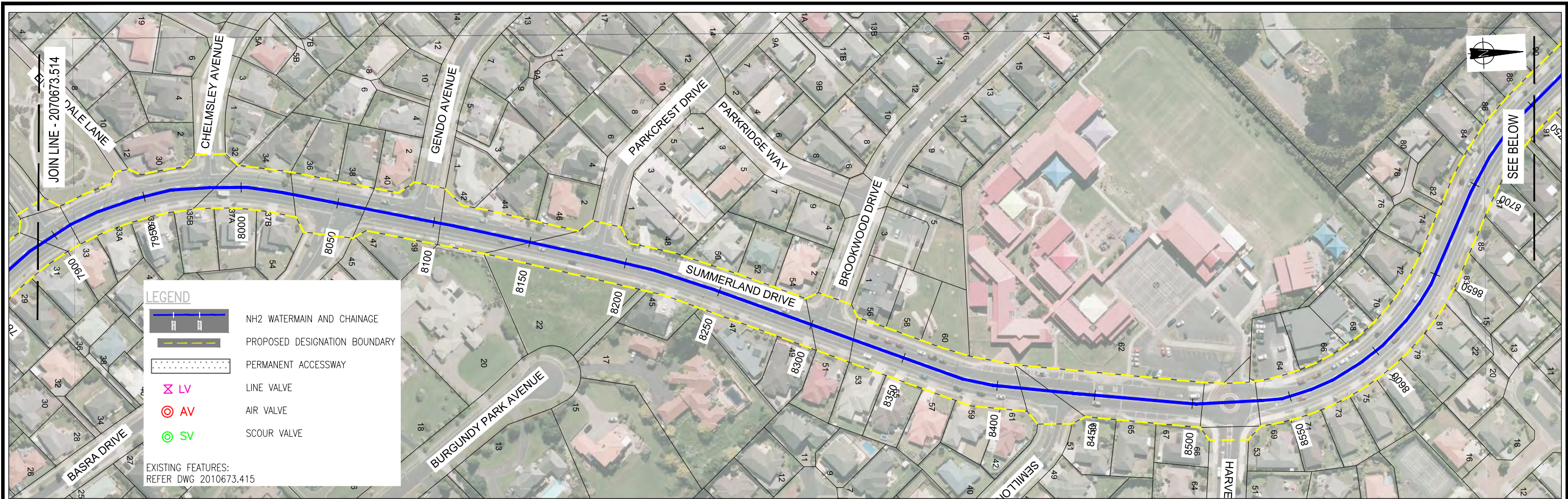
OPERATIONS
INFRASTRUCTURE



Watercare
COPYRIGHT - This drawing, the design concept, remain the exclusive property of Watercare Services Limited and may not be used without approval. Copyright reserved.

NORTH HARBOUR No.2 WATERMAIN GENERAL ROUTE PLAN

CAD FILE	2010673.513-516	DATE	22.02.16
ORIGINAL SCALE	A3	CONTRACT No.	5663
REF No.	WMNH2-91-G-514	ISSUE	2
DWG No.	2010673.514		2



- NOTES**
1. SITE LAYOUT AND DESIGNS INDICATIVE ONLY AND SUBJECT TO CHANGE DURING DETAILED DESIGN DEVELOPMENT.
 2. REFER TO DRAWING 2010673.415 FOR FULL SET OF PROJECT NOTES

ISSUE	DATE	AMENDMENT	BY	APPD.
2	22.02.16	ISSUED FOR CONSENT - UPDATED WITH WSL COMMENTS	W.O.	M.A.E.
1	03.12.15	ISSUED FOR CONSENT	W.O.	M.A.E.

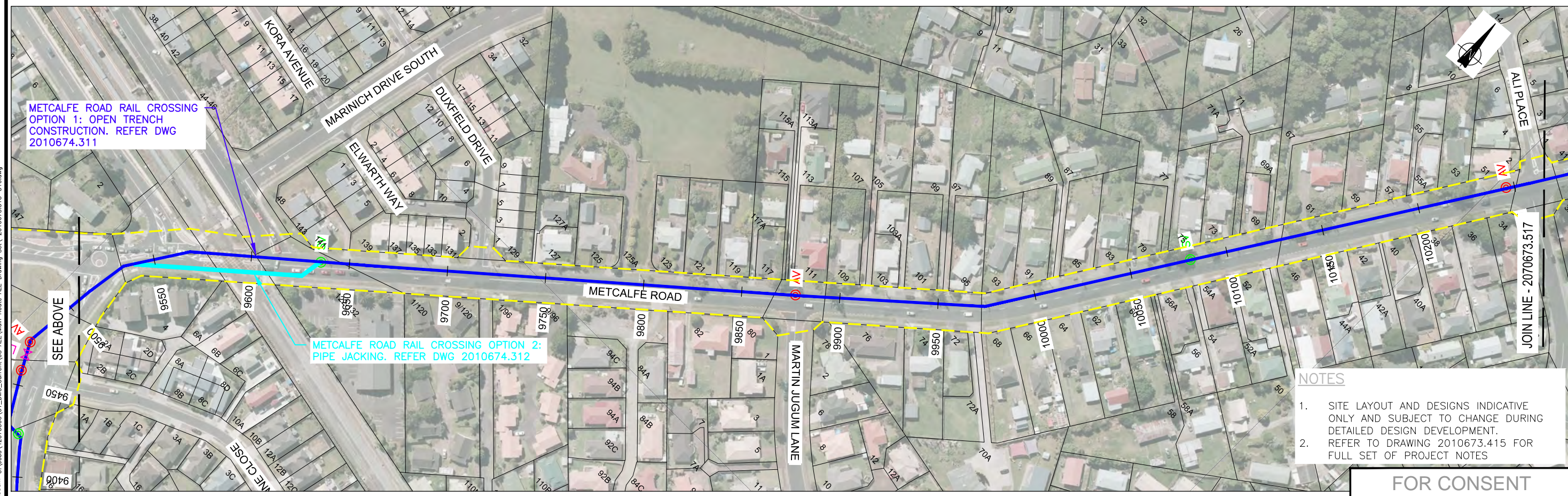
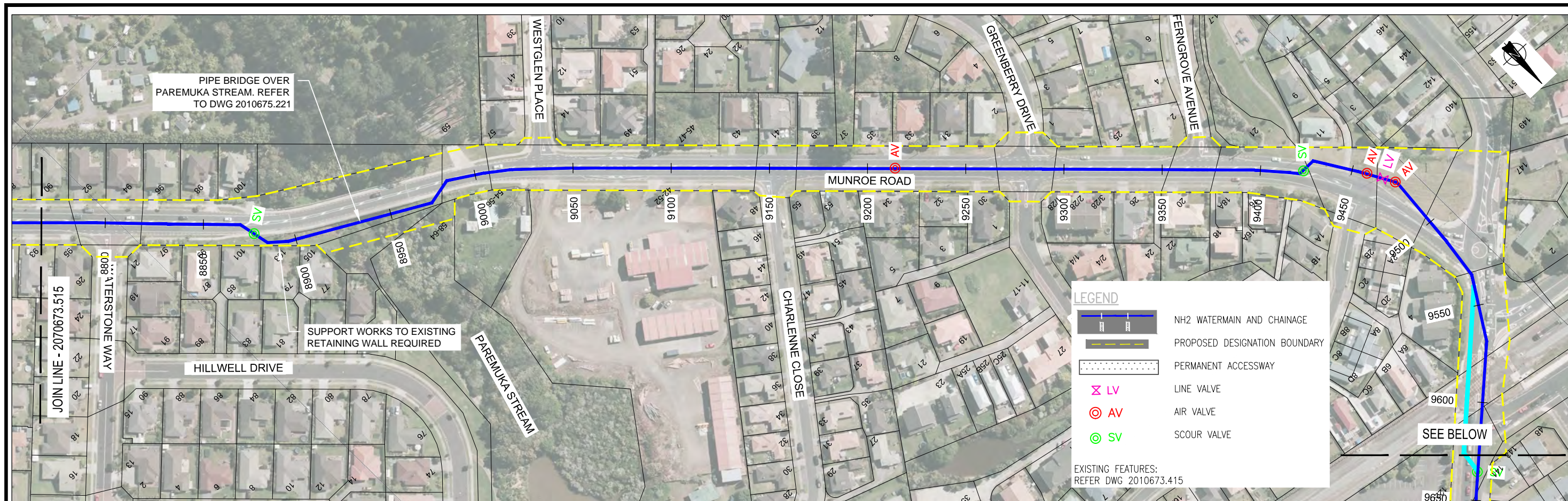
DESIGNED	N.H.	09.14
DES. CHECKED	M.R.	09.14
DRAWN	B.K.	09.14
DWG. CHECKED	M.R.	09.14
PROJECT LEADER	M.A.E.	09.14
INFRASTR'R APP'D		

Watercare
COPYRIGHT - This drawing, the design concept, remain the exclusive property of Watercare Services Limited and may not be used without approval. Copyright reserved.

NORTH HARBOUR No.2 WATERMAIN
 GENERAL
 ROUTE PLAN

CAD FILE	2010673.513-516	DATE	22.02.16
ORIGINAL SCALE	A3 1:2,000	CONTRACT No.	5663
REF No.	WMNH2-91-G-515	ISSUE	2
DWG No.	2010673.515		2

Plot Date: Feb 25, 2016 - 10:54am U:\Jobs\42072300\01_DWG_Current\08_AEE\Main Route AEE Drawing Set\ 2010673.513-516.dwg



- NOTES**
1. SITE LAYOUT AND DESIGNS INDICATIVE ONLY AND SUBJECT TO CHANGE DURING DETAILED DESIGN DEVELOPMENT.
 2. REFER TO DRAWING 2010673.415 FOR FULL SET OF PROJECT NOTES

FOR CONSENT

Plot Date: Feb 25, 2016 - 10:55am U:\Jobs\42073300\01_DWG_Current\08_AEE_Main Route AEE Drawing Set\ 2010673.513-516.dwg

ISSUE	DATE	AMENDMENT	BY	APPD.
2	22.02.16	ISSUED FOR CONSENT - UPDATED WITH WSL COMMENTS	W.O.	M.A.E.
1	03.12.15	ISSUED FOR CONSENT	W.O.	M.A.E.

DESIGNED	N.H.	09.14
DES. CHECKED	M.R.	09.14
DRAWN	B.K.	09.14
DWG. CHECKED	M.R.	09.14
PROJECT LEADER	M.A.E.	09.14
INFRASTR' APP'D		

Watercare
COPYRIGHT - This drawing, the design concept, remain the exclusive property of Watercare Services Limited and may not be used without approval. Copyright reserved.

NORTH HARBOUR No.2 WATERMAIN
 GENERAL
 ROUTE PLAN

CAD FILE	2010673.513-516	DATE	22.02.16
ORIGINAL SCALE A3	1:2,000	CONTRACT No.	5663
REF No.	WMNH2-91-G-516	ISSUE	2
DWG No.	2010673.516		2